

Dietary Supplements for Healthy Life



## 唯心美國強力卵磷脂 Ultra Lecithin

Lecithin is a phospholipid mixture and an important component of all cells.<sup>[1]</sup> Choline, an essential nutrient, is enriched in lecithin and is vital for various body functions, ranges from maintaining structural integrity of cell membranes to neurotransmission, as well as lipid-cholesterol transport and metabolism.<sup>[2]</sup> Choline deficiency has been associated with disorders related to cardiovascular, liver and brain functions.

### Promote Cardiovascular Health

Hyperlipidemia refers to high concentrations of cholesterol and triglycerides in blood. These substances could accumulate on the inner blood vessel wall forming plaques and harden the blood vessel, which could lead to increase in blood pressure.<sup>[3]</sup> In severe cases, blood clots could block blood flow and that would lead to impairment of organ functions in the affected areas. Conditions in the heart like coronary atherosclerosis or even heart attack could arise from hyperlipidemia.<sup>[4]</sup> A study on patients with hyperlipidemia has shown that lecithin supplementation could aid lipid homeostasis and reduce total cholesterol and low-density lipoprotein in blood.<sup>[5]</sup>

### Maintain Health of Liver

Liver is an essential organ for metabolism and detoxification poisonous substances. Choline is required to make the phosphatidylcholine portion of the very-low-density lipoprotein (VLDL) needed for exporting triacylglycerol from the liver.<sup>[6]</sup> A choline-deficient diet may lead to development of fatty liver disease while the disorder could be improved by choline supplementation.<sup>[7]</sup> Studies using rodent model or human patient subjects have shown that a lecithin-rich diet could stimulate bile and biliary cholesterol secretion and as such enhance lipid metabolism and reduce fat accumulation in the liver.<sup>[5,8]</sup> A choline metabolite, betaine, has been shown to provide hepatoprotection and improve liver functions.<sup>[9]</sup>

### Maintain Normal Brain Function

Cognitive abilities deteriorate with aging mainly due to reduced cerebral blood flow and degeneration of neurons in brain.<sup>[10]</sup> Alzheimer's Disease and other dementias are well known in related to the decrease in acetylcholine (ACh) release in the brain.<sup>[11]</sup> ACh is a neurotransmitter widely diffused in central, peripheral, autonomic and enteric nervous system.<sup>[2]</sup> ACh is an important chemical in controlling many brain functions including memory and learning. Lecithin is a good source of choline which is the precursor for ACh.<sup>[2]</sup> Hence, regular intake of lecithin could help maintain ACh level in the brain and as such improve memory and other brain functions.<sup>[12]</sup>

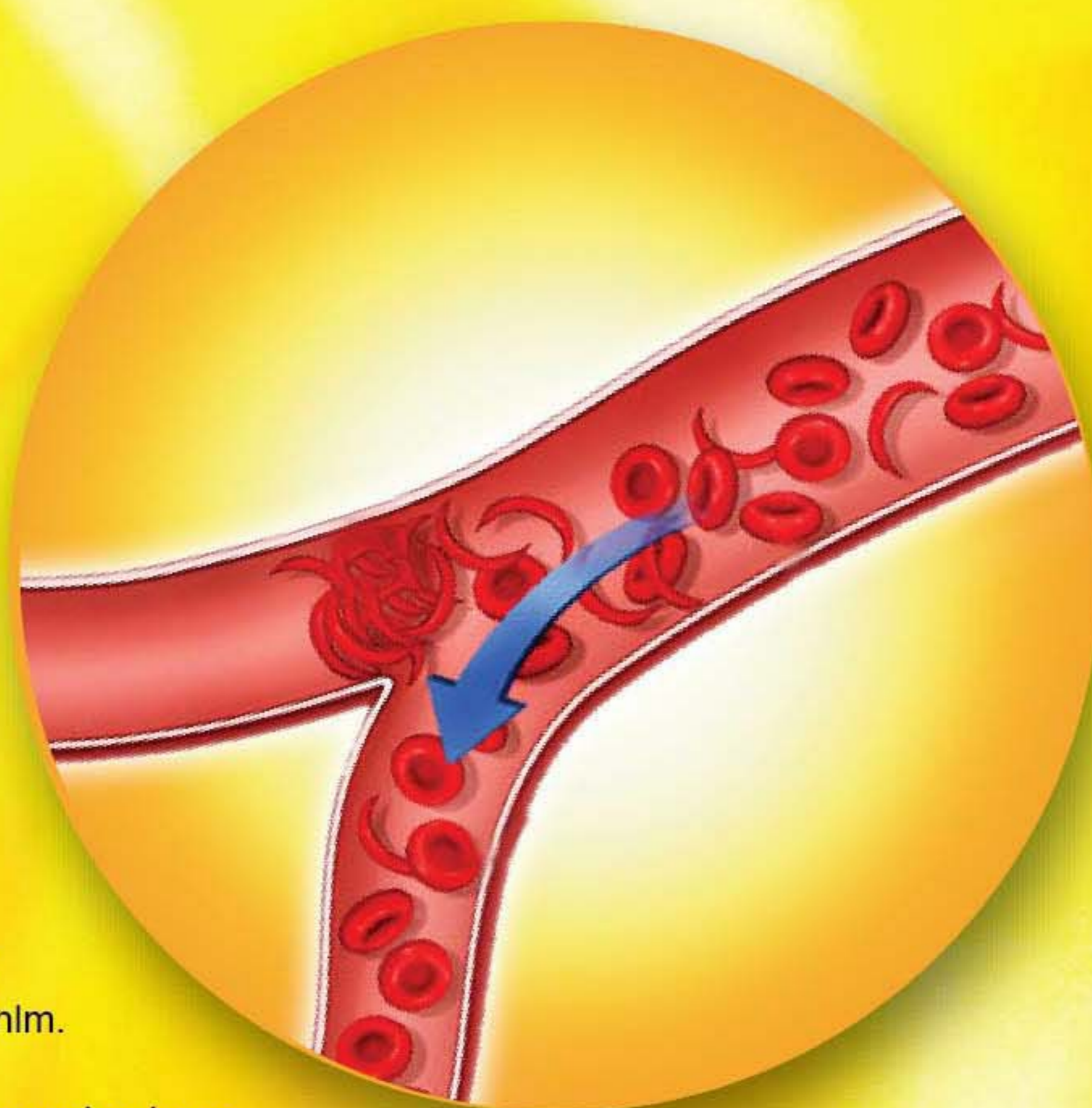
### Benefits of taking lecithin may include:

- Maintain cell membrane integrity and fluidity<sup>[1]</sup>
- Aid liver triglycerides transport and bile secretion<sup>[5,8]</sup>
- Help maintain healthy blood vessel, liver, heart and brain<sup>[5,9,12]</sup>
- Protect liver cells and improve liver functions<sup>[9]</sup>
- Support neurotransmitter synthesis<sup>[2]</sup>
- Improve memory and learning ability<sup>[12]</sup>

**Recommended daily dose:** For adult take 1-2 softgel capsules daily as dietary supplement or as directed by physicians.

### References:

1. Zeisel SH. Nutritional importance of choline for brain development. *J Am Coll Nutr.* 2004;23(6):621S-6S.
2. Zeisel SH, Blusztajn JK. Choline and human nutrition. *Ann Rev Nutr.* 1994;14:269-96.
3. U.S. National Library of Medicine, Department of Health and Human Services, National Institutes of Health. High blood cholesterol levels: MedlinePlus Medical Encyclopedia. Last update: 20 May 2011. Available at: <http://www.nlm.nih.gov/medlineplus/ency/article/000403.htm>.
4. Levine GN, Keaney JF Jr, Vita JA. Cholesterol reduction in cardiovascular disease. Clinical benefits and possible mechanisms. *N Engl J Med.* 1995;332(8):512-21.
5. Mourad AM, de Carvalho Pincinato E, Mazzola PG, Sabha M, Moriel P. Influence of soy lecithin administration on hypercholesterolemia. *Cholesterol.* 2010;2010:824813.
6. Zeisel SH. Choline: needed for normal development of memory. *J Am Coll Nutr.* 2000;19(5):528S-31S.
7. Ueland PM. Choline and betaine in health and disease. *J Inher Metab Dis.* 2011;34(1):3-15.
8. LeBlanc MJ, Brunet S, Bouchard G, Lamireau T, Yousef IM et al. Effects of dietary soybean lecithin on plasma lipid transport and hepatic cholesterol metabolism in rats. *J Nutr Biochem.* 2003;14(1):40-8.
9. Kathirvel E, Morgan K, Nandgiri G, Sandoval BC, Caudill MA et al. Betaine improves nonalcoholic fatty liver and associated hepatic insulin resistance: a potential mechanism for hepatoprotection by betaine. *Am J Physiol Gastrointest Liver Physiol.* 2010;299(5):G1068-77.
10. Alzheimer's Association. 2009 Alzheimer's disease facts and figures. *Alzheimers Dement.* 2009;5(3):234-70.
11. Sato A, Sato Y, Uchida S. Regulation of cerebral cortical blood flow by basal forebrain cholinergic fibers and aging. *Auton Neurosci.* 2002;96:13-9.
12. Ueda Y, Wang MF, Irei AV, Sarukura N, Sakai T, Hsu TF. Effect of dietary lipids on longevity and memory in the SAMP8 mice. *J Nutr Sci Vitaminol (Tokyo).* 2011;57(1):36-41.



Disclaimer: This product is not registered under the Pharmacy and Poisons Ordinance or the Chinese Medicine Ordinance. Any claim made for it has not been subject to evaluation for such registration. This product is not intended to diagnose, treat or prevent any disease.  
免責聲明：此產品沒有根據《藥劑業及毒藥條例》或《中醫藥條例》註冊。為此產品作出的任何聲稱亦沒有為進行該等註冊而接受評核。此產品並不供作診斷、治療或預防任何疾病之用。



MADE IN U.S.A

Manufactured By:  
Vitamins For Life  
248 Wagner Street,  
Middlesex, NJ 08846,  
U.S.A.



#SG32004042014